

**ERSATZTEILLISTE • SPARE PARTS LIST • LISTE DE PIÈCES DE RECHANGE  
LISTINO PEZZI DI RICAMBIO • LISTA DE PIEZAS DE RECAMBIO**

# VX 4.16

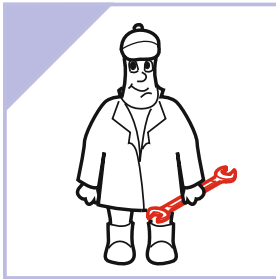
**DREHSCHIEBERPUMPEN • ROTARY VANE PUMPS • POMPES À PALETTES  
POMPE A PALETTE • BOMBAS DE PALETAS**

**MAKE IT BECKER.**



**INDEX/INDICE**

INDEX



Gebr. Becker GmbH  
Höcker Feld 29  
WUPPERTAL  
GERMANY  
www.becker-international.com  
Made in germany

year	XX/20XX	
No	A1234567	
Compressor / vacuum		
type	XXX	
frequency	XXX	z
speed	XXX	min <sup>-1</sup>
power required	XXX	kW
inlet capacity	XXX	m <sup>3</sup> /h
pressure	XXX	mbar
vacuum	XXX	mbar

**INDEX**



**WWW.BECKER-INTERNATIONAL-SHOP.COM**

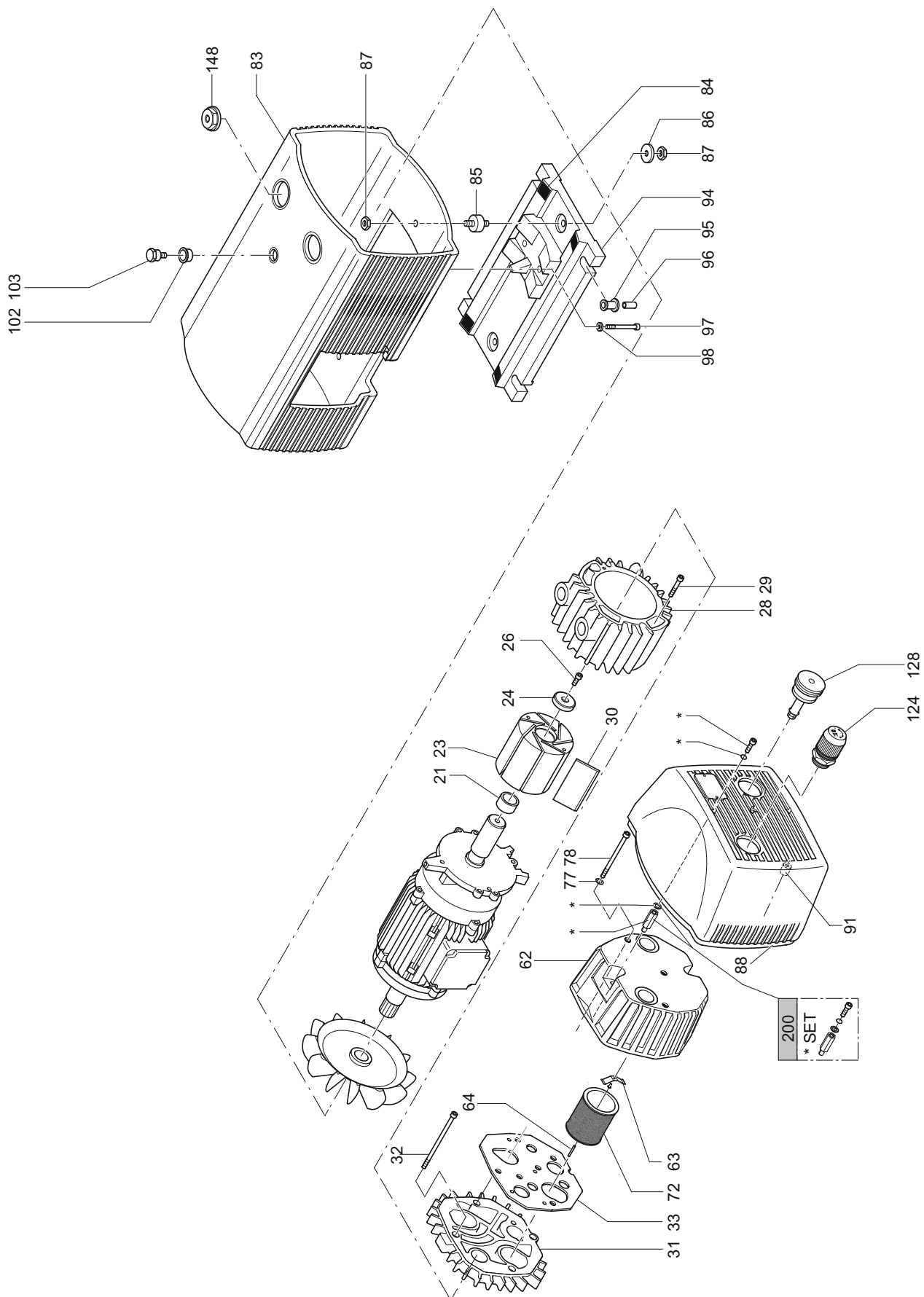


**wichtige Komponenten - Serviceteile**  
**important components - Service Parts**  
**composants importants - Pièces de service**  
**importanti componenti - Parti di servizio**  
**componentes importantes - Partes de servicio**



<b>INDEX</b>	Pos.	Ident No.	Description	Quantity
	30	901412 00007	CARBON VANES	KIT
	72	909519 01000	FILTER CARTRIDGE	1

VX 4.16



INDEX	Pos.	Bestell Nr.	Beschreibung	
	21	911009 00000	STAR-TOLERANZRING	
	23	020000 50200	KOLBEN	
	24	016800 16300	SPANNSCHEIBE	
	26	945355 00000	INNENSECHSKANTSCHRAUBE	
	28	000105 16300	GEHÄUSE	
	29	945321 00000	INNENSECHSKANTSCHRAUBE	
	30	901412 00007	SCHIEBER-KOHL (SATZ)	
	31	000705 16300	SEITENDECKEL	
	32	945372 00000	INNENSECHSKANTSCHRAUBE	
	33	008901 16300	DICHTUNG	
	62	004800 27400	FILTERDECKEL	
	63	009000 16300	ANPRESSFEDER	
	64	952009 00000	SPANNHÜLSE	
	72	909519 01000	FILTERPATRONE	
	77	948021 00000	DICHTRING	
	78	945325 00000	INNENSECHSKANTSCHRAUBE	
	83	006800 27400	GERÄTEHAUBE	
	84	060901 16300	DÄMPFUNGSSTREIFEN	
	85	741310 20000	GUMMIPUFFER	
	86	949402 00000	UNTERLEGSCHLEIFE	
	87	947001 00000	SECHSKANTMUTTER	
	88	006801 27400	FRONTHAUBE	
	91	951922 00000	GUMMIFORMTEIL	
	94	015100 27400	MOTORFUSS	
	95	951921 00000	GUMMIFORMTEIL	
	96	068000 27600	DISTANZSTÜCK	
	97	945323 00000	INNENSECHSKANTSCHRAUBE	
	98	949451 00000	UNTERLEGSCHLEIFE	
	102	968104 00000	GUMMI-DISTANZSTÜCK	
	103	029600 16300	BOLZEN	
	124	736001 99613	VAKUUMREGULIERVENTIL	
	128	727502 06000	ABBLASEVENTIL	
	148	951250 00000	VERSCHLUSS-SCHRAUBE	
	200	568000 27300	FRONTHAUBENBEFESTIGUNG (SATZ)	

WEITERE VARIANTENABHÄNGIGE BAUTEILE → [VARIANTS](#) (SEITE 9)

INDEX	Pos.	Ident No.	Description	
	21	911009 00000	STAR-TOLERANCE-RING	
	23	020000 50200	ROTOR	
	24	016800 16300	CLAMPING DISC	
	26	945355 00000	SOCKET HEAD SCREW	
	28	000105 16300	PUMP BODY	
	29	945321 00000	SOCKET HEAD SCREW	
	30	901412 00007	CARBON VANES (KIT)	
	31	000705 16300	LID	
	32	945372 00000	SOCKET HEAD SCREW	
	33	008901 16300	GASKET	
	62	004800 27400	FILTER COVER	
	63	009000 16300	BLADE SPRING	
	64	952009 00000	LOCATING PIN	
	72	909519 01000	FILTER CARTRIDGE	
	77	948021 00000	SEALING RING	
	78	945325 00000	SOCKET HEAD SCREW	
	83	006800 27400	PROTECTIVE HOOD	
	84	060901 16300	ELASTIC PAD	
	85	741310 20000	RUBBER BUFFER	
	86	949402 00000	WASHER	
	87	947001 00000	HEX.NUT	
	88	006801 27400	FRONT HOOD	
	91	951922 00000	RUBBER ELEMENT	
	94	015100 27400	FOOT	
	95	951921 00000	RUBBER ELEMENT	
	96	068000 27600	SPACING COLLAR	
	97	945323 00000	SOCKET HEAD SCREW	
	98	949451 00000	WASHER	
	102	968104 00000	RUBBER SLEEVE	
	103	029600 16300	BOLT	
	124	736001 99613	VACUUM REGULATING VALVE	
	128	727502 06000	BLOW-OFF VALVE	
	148	951250 00000	SCREW PLUG	
	200	568000 27300	FRONT HOOD ATTACHMENT (KIT)	

FURTHER VARIANT-DEPENDENT COMPONENTS → [VARIANTS \(PAGE 9\)](#)

INDEX	Pos.	No. d'identification	Designation
	21	911009 00000	BAGUE STAR
	23	020000 50200	PISTON
	24	016800 16300	DISQUE DE SERRAGE
	26	945355 00000	VIS HEXAGONALE INTERNE
	28	000105 16300	CORP DE POMPE
	29	945321 00000	VIS HEXAGONALE INTERNE
	30	901412 00007	PALETTE DE CHARBON (KIT)
	31	000705 16300	COUVERCLE
	32	945372 00000	VIS HEXAGONALE INTERNE
	33	008901 16300	JOINT
	62	004800 27400	COUVERCLE DU FILTRE
	63	009000 16300	RESSORT-JAME
	64	952009 00000	DOVILLE DE ETRAGE
	72	909519 01000	CARTOUCHE FILTRANTE
	77	948021 00000	JOINT
	78	945325 00000	VIS HEXAGONALE INTERNE
	83	006800 27400	CAPOT DE PROTECTION
	84	060901 16300	AMORTISSEUR
	85	741310 20000	AMORTISSEUR EN CAOUTCHOUC
	86	949402 00000	RONDELLE
	87	947001 00000	ECROU A 6PANS
	88	006801 27400	CAPOT AVANT
	91	951922 00000	ELEMENT EN CAOUTCHOUC
	94	015100 27400	PIED
	95	951921 00000	ELEMENT EN CAOUTCHOUC
	96	068000 27600	DONILLE D'ECARMENT
	97	945323 00000	VIS HEXAGONALE INTERNE
	98	949451 00000	RONDELLE
	102	968104 00000	PIECE D'ECARTEMENT CAOUTCHOUC
	103	029600 16300	BOULON
	124	736001 99613	SOUPAPE REGLAGE VIDE
	128	727502 06000	SILENCIEUX
	148	951250 00000	BOUCHON
	200	568000 27300	PIÈCES DE FIXATION DU CAPOT AVANT (KIT)

AUTRES COMPOSANTS DÉPENDANTS DES VARIANTES → [VARIANTS \(PAGE 9\)](#)









INDEX	Pos.	No. identificazione	Designazione
	21	911009 00000	STAR-ANELLO TOLLERANZA
	23	020000 50200	ROTORE
	24	016800 16300	DISCO DI FISSAGGIO
	26	945355 00000	VITE ESAGONALE INTERNA
	28	000105 16300	CARCASSA
	29	945321 00000	VITE ESAGONALE INTERNA
	30	901412 00007	PALETTE DI CHARBONE (KIT)
	31	000705 16300	COPERCHIO
	32	945372 00000	VITE ESAGONALE INTERNA
	33	008901 16300	GUARNIZIONE
	62	004800 27400	COPERCHIO FILTRO
	63	009000 16300	MOLLA
	64	952009 00000	SPINE DI RISCONTRO
	72	909519 01000	CARTUCCIA FILTRO
	77	948021 00000	ANELLO GUARNIZIONE
	78	945325 00000	VITE ESAGONALE INTERNA
	83	006800 27400	COPERCHIO DI PROTEZIONE
	84	060901 16300	AMORTIZZATORE
	85	741310 20000	AMMORTIZZATORE IN GOMMA
	86	949402 00000	RONDELLA
	87	947001 00000	DADO ESAGONALE
	88	006801 27400	COFANO
	91	951922 00000	ELEMENTO IN GOMMA
	94	015100 27400	PIEDE
	95	951921 00000	ELEMENTO IN GOMMA
	96	068000 27600	BOCCOLA DISTANZIATRICE
	97	945323 00000	VITE ESAGONALE INTERNA
	98	949451 00000	RONDELLA
	102	968104 00000	PEZZO DI SCOSTAM. IN GOMMA
	103	029600 16300	BULLONE
	124	736001 99613	VALVOLA REGOLAZIONE VUOTO
	128	727502 06000	SILENZIATORE
	148	951250 00000	VITE DI CHIUSURA
	200	568000 27300	PARTI DI FISSAGGIO DEL COFANO (KIT)

ULTERIORI COMPONENTI DIPENDENTI DALLA VARIANTE ➔ [VARIANTS](#) (PAGINA 9)

INDEX	Pos.	No. de pedido	Descripción	
	21	911009 00000	ANILLO DE TOLERANCIA STAR	
	23	020000 50200	ÉMBOLO	
	24	016800 16300	ARANDELA TENSORA	
	26	945355 00000	TORNILLO HEXAGONAL INTERIOR	
	28	000105 16300	CARCASA	
	29	945321 00000	TORNILLO HEXAGONAL INTERIOR	
	30	901412 00007	EMPUJADOR DE CARBÓN (KIT)	
	31	000705 16300	TAPA LATERAL	
	32	945372 00000	TORNILLO HEXAGONAL INTERIOR	
	33	008901 16300	JUNTA	
	62	004800 27400	TAPA DE FILTRO	
	63	009000 16300	MUELLE DE PRESIÓN	
	64	952009 00000	CASQUILLO TENSOR	
	72	909519 01000	CARTUCHO DE FILTRO	
	77	948021 00000	ANILLO DE JUNTA	
	78	945325 00000	TORNILLO HEXAGONAL INTERIOR	
	83	006800 27400	CUBIERTA DEL APARATO	
	84	060901 16300	TIRAS DE AMORTIGUACIÓN	
	85	741310 20000	AMORTIGUADOR DE GOMA	
	86	949402 00000	ARANDELA	
	87	947001 00000	TUERCA HEXAGONAL	
	88	006801 27400	CUBIERTA FRONTAL	
	91	951922 00000	PIEZA DE ORMA DE GOMA	
	94	015100 27400	PIE DE MOTOR	
	95	951921 00000	PIEZA DE ORMA DE GOMA	
	96	068000 27600	PIEZA DISTANCIADORA	
	97	945323 00000	TORNILLO HEXAGONAL INTERIOR	
	98	949451 00000	ARANDELA	
	102	968104 00000	PIEZA DE GOMA DISTANCIADORA	
	103	029600 16300	BULÓN	
	124	736001 99613	VÁLVULA REGULADORA DE VACÍO	
	128	727502 06000	VÁLVULA DE BARRIDO	
	148	951250 00000	TORNILLO DE CIERRE	
	200	568000 27300	PIEZAS DE FIJACIÓN DE LA CUBIERTA FRONTAL (KIT)	

MÁS COMPONENTES DEPENDIENTES DE VARIANTES ➔ [VARIANTS \(PÁGINA 9\)](#)



Variant	Pos.	Order No.		Beschreibung / Description / Designation Designazione Desripcion
		   	   	
1~ Motor	5	964233 00000		WINKEL / BRACKET / SUPPORT / SUPPORTO / SOPORTE
1~ motor	6	945204 00000		SECHSKANTSCHRAUBE / HEX-HEAD SCREW / VIS HEXAGONALE / VITE ESAGONALE / TORNILLO DE CABEZA HEXAGONAL
1~ moteur	7	947102 00000		MUTTER / NUT / ECROU / DADO / TUERCA
1~ motore	8	742002 40000		KABEL / CABLE / CABLE / CAVO / CABLE
1~ motor	82	006802 27400		HAUBE / PROTECTING HOOD / CARTER PROTECTEUR / CARTER DI PROTEZIONE / CAPERUZA
	83		006800-27400	HAUBE / PROTECTING HOOD / CARTER PROTECTEUR / CARTER DI PROTEZIONE / CAPERUZA



**MAKE IT BECKER.**

28000050202 | 2022-02-10 | All rights reserved